



14⁺
HOURS
BURN TIME

Regency CI2600 shown with the low profile faceplate.

Regency CI2600

Large Hybrid Catalytic Wood Insert
Featuring **Eco-Boost** Technology

EPA
APPROVED

79.7%
EFFICIENCY

22"
MAX. LOG SIZE

2,600^{sq.}
ft.
HEATING CAPACITY

77,000
MAX BTU

2.6
cu. ft. FIREBOX

1.8
g/hr. EMISSIONS

One of the largest, most efficient wood burning inserts available in North America

Style meets technology.

The Regency CI2600 Large Wood Insert features a flush design, with 2 different stylish faceplate options – whether you prefer a contemporary look or a more traditional design. This highly efficient wood insert will heat homes up to 2600 square feet while meeting strict EPA standards.

A broad heating *range* means increased flexibility.

The loading capacity combined with the controllable burn rate of our Eco-Boost technology provides flexibility to heat smaller homes with less reloading and large homes with the maximum capacity available.



Regency CI2600 shown with the contemporary faceplate and optional backing plate.



Eco-Boost Technology

The hybrid catalytic system allows the fuel to burn at a slower rate, delivering 14 or more hours of heat* with a single load of wood. Fuel is utilized to its full potential with only 1.8 g/hr. of emissions and **79.7%** efficiency!



Burn Overnight without re-Loading

The large firebox measuring 2.6 Cubic Feet means you can load up overnight, without worrying about waking up to a cold house. Providing 14 hours or more* of consistent, reliable heat - the large firebox has room for up to a 22" log.



Easy Single-Lever Operation

A simple single-lever air control conveniently located at the front of the stove can be adjusted to meet home heat requirements, from a hot burn to a smoldering glow that keeps the chill away.



Large View Cast Iron Door

The heavy duty cast iron door offers a 250 square inch viewing area, delivering an excellent view of the stunning fire. The door opens to 110° making wood loading easier.

Lifetime Warranty

With over 35 years of wood stove manufacturing expertise, along with the most comprehensive warranty in the industry, the CI2600 is guaranteed to deliver a lifetime of dependable heat. The catalytic combustor is covered for the first six years. Consult the manual for complete details.



Standard Features

- Eco-Boost Technology
- 2.6 cu. ft. firebox accommodating 22" logs
- Single lever bypass damper
- Single-lever air control
- High performance brick-lined firebox
- Clean glass airwash system
- Contemporary cast iron door
- 250 sq. inch viewing area
- 110 degree opening door for easy loading
- Quick access leveling bolts
- Rollers for easy installation

Optional Features

- Low profile or Contemporary faceplate
- Backing plate in 2 sizes
- Concealed 2 speed blower
- Digital Catalytic temperature gauge
- Offset flue adapter for installation flexibility

Technology	Eco-Boost combustion technology
Heating capacity**	up to 2,600 sq. ft.
Firebox capacity	2.6 cu. ft.
Maximum BTUs*	382,000
Maximum BTUs per hour	77,000 ***
Log size	22 in.
Emissions	1.8 g/hr.
Efficiency	79.7%
Viewing area	250 sq. in.
Loading opening	20 in. W x 10 in. H
Temperature activated blower (optional)	125 CFM
Firebox construction	Heavy gauge premium steel
Burn Time*	14+ hrs
Vent	6 in.

	Width	Height	Depth
Minimum Fireplace Opening	28-13/16"	21-3/4"	19"
Faceplate Size	26"	40"	-

Optional Backing Plate	Width	Height
Standard	44"	29-7/8"
Oversized	48"	33-7/8"

* Length of burn time and BTU output depend upon wood species used, moisture content of wood, elevation, climate conditions and installation.

** Varies depending on home floor plan, house layout, heat loss of the house and quality/moisture content of wood.

*** Based on 8,500 BTU's per lbs.

How does **Eco-Boost** technology *work*?

Secondary Air Tube

The secondary air tube, working with the catalyst, ensures the fuel is burned to its full potential resulting in low emissions and high heat output.

Catalytic Combustor

Create consistent heat by slowly re-burning wood smoke particles that would normally go up the chimney.



Heavy Duty Stainless Steel Flame Shield

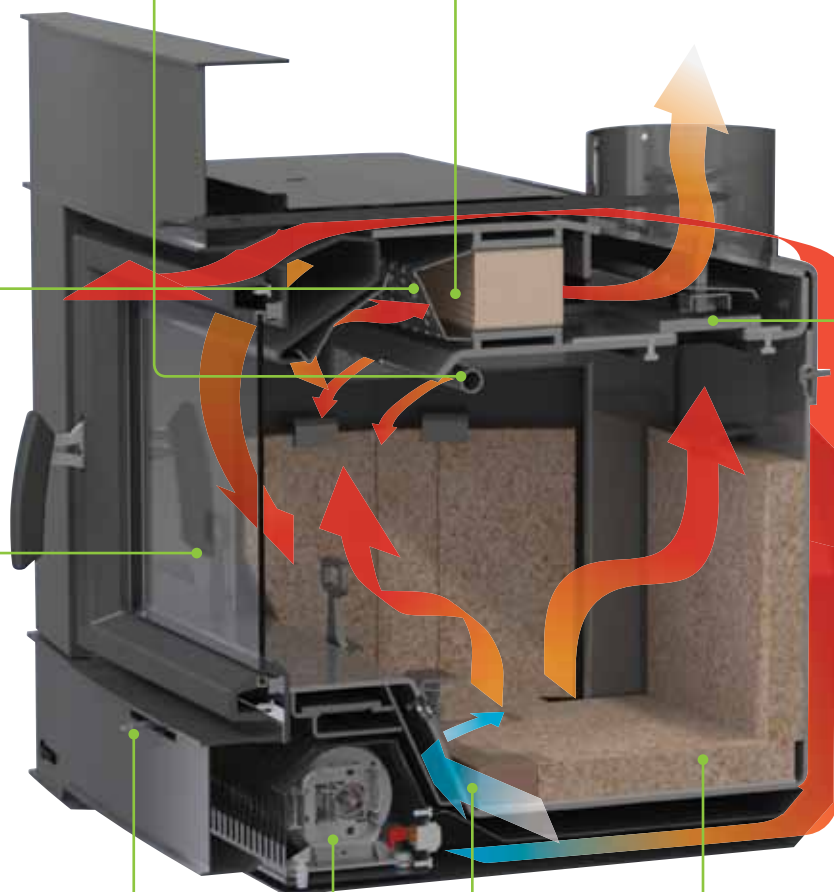
Provides better distribution of gases over the catalyst and protects the catalyst from direct flame exposure.

Air wash System

Keeps the glass clean and provides an excellent view of the fire.

Single Lever Air Control

Easily controls the heat output and intensity of the fire by adjusting the amount of air intake.



Bypass Damper

Used to close the damper & engage the catalytic combustor.

High Performance Bricks

Provides superior insulation and heat reflection.

Blower

The 2-speed blower distributes heat throughout the room.

Blower cassette can be removed for cleaning.

Combustion Air

Air from the room is drawn in for primary and secondary combustion.

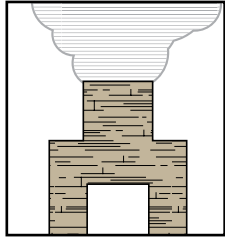
Why Eco-Boost Technology?

A *Green Solution* that will save you money

Higher Efficiency = Saves you Fuel, Money & Time.

Emissions _____

Efficiency _____



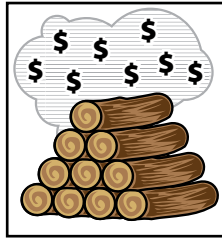
Open Fireplace
40-80 g/hr



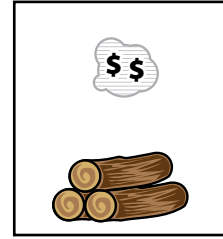
EPA Non-Catalytic
3-7 g/hr



EPA **Eco-Boost**
1-2 g/hr



Open Fireplace
15% efficient
1-2 hr burn time



EPA Non-Catalytic
75% efficient
8-10 hr burn time



EPA **Eco-Boost**
80% efficient
14+ hr burn time

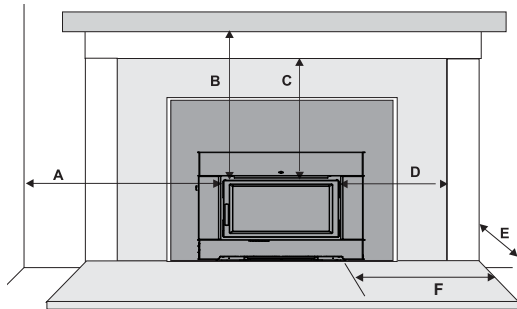
Specifications

Minimum Clearances to Combustible Materials _____

The minimum required clearances to combustible materials when installed into a masonry or factory built fireplace are listed below.

Minimum Clearances to Combustible Materials	Adjacent Side Wall (to Side of Door)	Mantel** (to Top of Door)	Top Facing (to Top of Door)	Side Facing (to Side of Door)	Minimum Hearth Extension*	Minimum Hearth Side Extension*
	A	B	C	D	E	F
CI2600	12-3/16"	21-5/8"	14"	7-3/8"	US 16" Canada 18"	8"

Measurements A,B,C,D are from Top/Side of Door



Minimum Hearth Extension for the front (E) and sides (F) are measured from the fuel door opening.

Side and Top facing is a maximum of 1.5" thick.

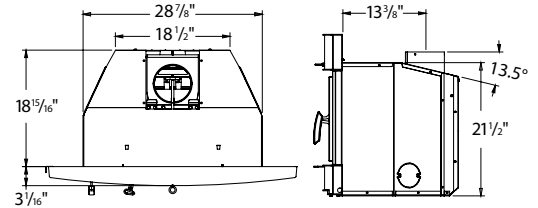
* Side hearth extension for Canada measured from side of appliance.

* Hearth to have minimum: R value of 2.13 or greater.

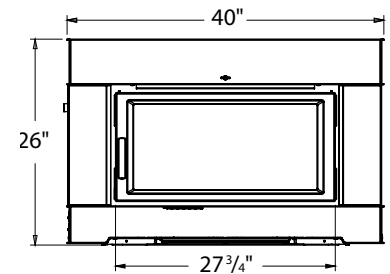
** A non-combustible mantel may be installed at a lower height if the framing is made of metal studs covered with a non-combustible board.

** Max. mantle depth is 10" (254mm)

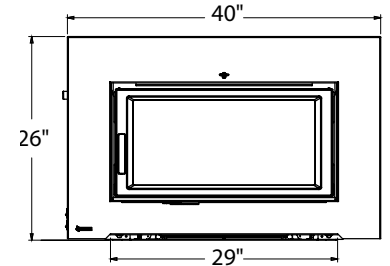
Dimensions _____



Contemporary Faceplate >



Low Profile Faceplate >



Optional Backing Plate Width Height

Standard	44"	29-7/8"
Oversized	48"	33-7/8"

Your Regency Dealer Is

These are guidelines only, subject to change without notice. Always refer to the actual product manual that comes with your unit for specific, current dimensions and clearances.

© 2014 FPI Fireplace Products International Ltd. Regency is a registered or proprietary trademarks of FPI Fireplace Products International Ltd. All rights reserved. Printed in Canada (03/14) Part no. 944-419